

The City Connection

VOL. 1, NO. 7

CITY OF ROSEBURG NEWSLETTER

State of the City Address



Larry Rich
Mayor

As we reflect back on 2001, it would be easy to focus on the problems that our nation, our state and our city are facing – threats of terrorism, a rising unemployment rate, talk of a recession. So I would like to instead focus on what's right about our community. And what's right about our community is a reflection of what has helped our nation get through the tragedy of September 11. It begins with the attitude of "UNITED WE STAND". It continues with the awareness that it takes involvement from all of our citizens if we are to improve our quality of life.

I am proud to work with public employees, the City Council, the City Commissioners and volunteers who are dedicated to serving the citizens of Roseburg and who have been able to accomplish a great deal with limited resources and personnel. To all of you, I say "Thanks."

But I also call on all our citizens to become involved, to offer suggestions on ways we can do better, to stop by city hall, call or write your City Council members and attend City Council meetings. For it is with this active partnership that we will be able to move forward to meet the challenges of 2002 and beyond.

Roseburg continues to enjoy a comparatively safe and comfortable environment because of our Police Department, headed by Chief Chris Brown. Chief Brown attributes this success to two factors: First, a community that supports its police and provides the department with the resources needed to do their jobs professionally and effectively. Secondly, a conscientious, committed and capable group of employees who take pride in their community and proactively respond to those who threaten the safety and well-being of our citizens. The Police Department was further strengthened by Senior Volunteers who logged an incredible 4,464 hours of cost-free service to the community in areas such as patrolling disabled parking, walking through our shopping centers, doing vacation house-checks, handling abandoned vehicles and following-up with victims of crimes. Furthermore, RAYS, a youth accountability program, continues to achieve a high success rate in preventing young people from re-offending and resulted in 1,853 hours of community service. Thanks to KPIC, our safety belt public service announcement, "The Good, The Bad, and The Ugly," won the Traffic Safety Awareness Media Award sponsored by the Oregon Department of Transportation. And while the department had already taken an active role in domestic terrorism issues, the events of 9/11 caused us to reexamine the need to facilitate and improve cooperation between a number of different agencies who would be called upon to respond to such threats.

Jack Cooley took over command of the Fire Department which responded to over 3500 emergency calls. The department replaced 25-year-old extrication equipment with a new, lightweight and more versatile system. They purchased a new air compressor, giving them the last tool needed for maintaining and testing all breathing apparatus. New uniforms with fire resistant fabric were also added. A FEMA grant of \$34,533 made it possible to acquire confined space rescue equipment. Along with the joint efforts of the Douglas County Health Department, law enforcement and Mercy Hospital, fire personnel participated in several training sessions including new protocols on terrorism. Members attended multi-agency training sessions that included live burn training, flammable liquid and propane gas training and the handling of hazardous materials. In addition to more hours spent on public education programs, inspections and training, the early drought conditions of the past year resulted in an aggressive pre-fire plan that provided additional safety to firefighters and homeowners.

The Community Development Department, under the direction of Dan Huff, was involved in several new projects. Planning Division projects included the Roseburg Blast Downtown Walking Tour. Research and eyewitness interviews were concluded and compiled, and the staff will be meeting with printers to discuss final production. The department completed the nomination requirements necessary for identifying downtown Roseburg as a National Historic District and is awaiting word of Federal confirmation. Four new subdivisions – Phase I & II of Mulholland Heights, Hoover Hills, Douglas Avenue Estates and Warewood Phase III & IV - kept department personnel busy with processing and inspection requirements. During the summer, the Charlie Gardner Park was dedicated. Two compelling aspects of this project were the public/private partnership and the low impact creek frontage bike/pedestrian path. The Building Division issued 1,028 building permits including the RHS Wellness Building, Albertson's, Phoenix School, the Garden Valley Center remodel and two new medical offices. The Neighborhood Clean Up Project provided dumpsters for two neighborhoods to use in order to dispose of unsightly debris.

Under the leadership of Jim Dowd, one of the most visible departments during the past year was the Parks and Golf Department. During this past year, Phase II of Sunshine Park, the new community park located on the North Umpqua Highway, was completed which included restrooms, a concession stand, fencing, landscaping and paved parking. This past fall, construction began on the next phase which calls for completion of the baseball fields, concession stand, batting cages, bridges, paved trails, picnic shelters and children's play structure. The park should be ready for full use in early spring of 2002. As the new baseball fields at Sunshine Park were being completed, the Parks Department began the process of dismantling the old baseball fields at Fir Grove. Volunteers spent hours removing the backstops, fencing and dugouts and preparing the ground for new soccer fields. Staff relocated the electrical lines and graded and reseeded the bare ground in order to provide temporary soccer fields until the completion of the new facility. A number of public meetings were held with consultants, the Parks and Recreation Commission and City Staff to consider design needs. In place of the old configuration, one large grassy area will provide fields of various dimensions to be utilized depending on what age group will be using the fields at any given time. Other focuses for the department were Eagles Park and Eastwood Park. Eagles Park saw a complete renovation this past summer which provided new park tables, benches, lighting and concrete walkways as well as grassy areas and shrubs. The Master Plan for Eastwood Park includes a perimeter walkway, playground structures for tots and older children, picnic tables and benches. In accordance with the Parks Master Plan, the City purchased two parcels located between Templin Beach and Micelli Park. The 2.2 acres will provide for an expanded riverfront park while enhancing the recreational opportunities for all Roseburg residents.

Anyone who has traveled the streets of Roseburg is aware of the numerous projects Chris Berquist and the Public Works Department Staff have been busy with during the past year. As part of the Pavement Management Program, 58 streets were given facelifts - 21 were provided with a layer of asphalt and 37 were slurry sealed. Construction is underway on Stewart Parkway to erect a bridge over I-5. The new bridge will accommodate four lanes of traffic, bike lanes and sidewalks. Construction is expected to take close to two years. A traffic signal on Stewart Parkway at the entrance to Mercy and Big K was installed. The Water Division was also busy with various projects. Changes have been made at the Water Treatment Plant located on the North Umpqua River in Winchester. The biggest improve-

see State Address, continued on page 2;

What's Inside



- 2. City Staff**
- 3. Downtown**
- 4. Community Projects**
- 5. Community Projects**
- 6. Fir Grove Improvements!**
- 7. Ordinances & Resolutions**
- 8. City Meeting Calendar**

ment was to replace the gaseous chlorine system, used for disinfection, with a safer system that generates chlorine on site from salt. The Water Division oversaw the comp of the Rocky Ridge Reservoir which provides improved flows and fire protection to citizens in the surrounding areas. The one-million gallon tank, constructed by the Rocky Subdivision developers with financial participation by the City, allowed the City to eliminate two older pump stations, reducing operating costs and providing better presst customers. The Public Works Department has become more aggressive in reaching its goal of replacing aging and undersized lines. This past year, transmission mains replaced on Jackson, Rose and Court Streets as well as on NE Stephens. The hiring of a Civil Engineer allowed the department to produce plans in-house and increase the ber of jobs completed each year.

For the eighth consecutive year the Finance Department, led by Lance Colley, received the Government Finance Officers Association award for "Excellence in Fin Reporting." Some of the biggest changes to the department involved better use of technology. An automated payroll system was added with two-thirds of the City empl taking advantage of the new direct deposit option. A new staff person was hired to provide technical computer support, oversee network administration and new Internet e mail connections and assist with software applications. Nearly 5 million dollars worth of Urban Renewal bonds were issued in March to help finance a number of infrastr projects including the Stewart Parkway overpass, the Vine/Alameda/Oakland street project and the acquisition of properties to support current and future urban renewal pr Department staff also worked closely with Public Works and the Downtown Development Board on improvements in the Roseburg Town Center which resulted in the instal of five blocks of historically designed light fixtures as well as new trash receptacles. Benches and tree grates will be added this spring.

Personnel Director Barbara Gershon finished another successful year with much of her work focusing on wellness and safety. The Safety Program was updated and man training scheduled for city employees. Improvements were also made to the Emergency Operations Plan for the City. Along with these programs, the City renewed emp participation in a Wellness Program through a contract with Mercy Medical Center. And finally, the department handled the hiring of 18 City employees.

City Recorder Sheila Cox and Secretary Nancy Cobb spent a lot of time developing and implementing a new administrative rule allowing the City to dispose of surplus pe property having zero or minimum resale value. Rather than incurring the expense of conducting a public auction, the items were given to local non-profit organizations s low-income families in the community. The process of getting the Municipal Code on-line was completed just this past week. Other City departments, elected officials and bers of the public will now be able to access, via the internet, all current City ordinances 24 hours a day, 7 days a week. They also oversaw 48 requests for bids and/or pro and distributed almost 700 specification documents associated with those bids.

And once again, I'd like to take the time to thank Debi Davidson, the City Manager's Administrative Assistant, who continues to keep us informed as to what's really going that we can more easily and efficiently accomplish our goals.

While I am proud of all that the City has accomplished this past year, I'm also excited about what the future holds for Roseburg. In November 2001, a work study sessio held to go over goals, issues and directions that the Council felt were important. After much discussion, seven key areas were identified as having the most support. include distributing a policy for handling and distributing community requests for financial assistance, increasing the bike trail system, attaching an anchor store for the dow area, supporting downtown evening activities and establishing a task force which would look at ways to better utilize the beauty of the South Umpqua River such as rive restaurants. The Council also wants to look at developing an annexation plan that is fair and equitable to the surrounding areas involved. We discussed replacing the c Public Works building, which has had problems with flooding. And finally, consideration was given to working with other agencies to investigate the feasibility of develo state-of-the-art facility for fire and police training.

I would like to end this State of the City Address by once more commending City Staff for a job well done. But I also want to call on you to work harder for our future. W a past that we can honor and be proud of, a present that we value and have worked hard to achieve, and a future that calls for the energy, vision and talent of all wh Roseburg home.

Mayor, Larry Rich

CITY STAFF

Located at 900 SE Douglas Avenue, unless otherwise noted:

Web Page: <http://www.rosenet.net/~roseburg>



MAYOR & CITY COUNCIL

	PHONE	EMAIL ADDRESS
City Manager Randy Wetmore	672-7701 ext 222	rwetmore@ci.roseburg.or.us
City Recorder Sheila Cox	672-7701 ext 219	scox@ci.roseburg.or.us
Community Development Dir Dan Huff	440-1177	dhuff@ci.roseburg.or.us
Building Division	440-1175	cmorgan@ci.roseburg.or.us
Inspection Line	440-9616	cmorgan@ci.roseburg.or.us
Planning Division	440-1177	vtower@ci.roseburg.or.us
Zoning Line	440-1176	vtower@ci.roseburg.or.us
Finance Director Lance Colley	672-7701 ext 212	lcolley@ci.roseburg.or.us
Fire Chief Jack Cooley, 774 SE Rose	673-4459	rsbgfire@rosenet.net
Emergency	9-1-1	
Parks and Golf Director Jim Dowd	672-7701 ext 236	jdowd@ci.roseburg.or.us
Stewart Park Caretaker	673-8387	
Stewart Park Golf Course	672-4592	
Tennis Court Facility	673-3429	
Personnel Director Barbara Gershon	672-7701 ext 222	bgershon@ci.roseburg.or.us
24-Hour Jobline	440-1199	ddavidson@ci.roseburg.or.us
Police Chief Chris Brown		
205 SE Jackson	673-6633	cbrown@ci.roseburg.or.us
Emergency	9-1-1	
Police Officer (Non-Emergency)	440-4471	
Web Page		http://www.sorcom.com/~cops/
Public Works Director Chris Berquist	672-7701 ext 236	cberquist@ci.roseburg.or.us
Airport (Adventure Aviation)	673-5706	
Water After Hours Emergency	673-0397	

Mayor ~ Larry Rich

Councilor Ward I Verna Ward **Councilor Ward II** Dan Hern

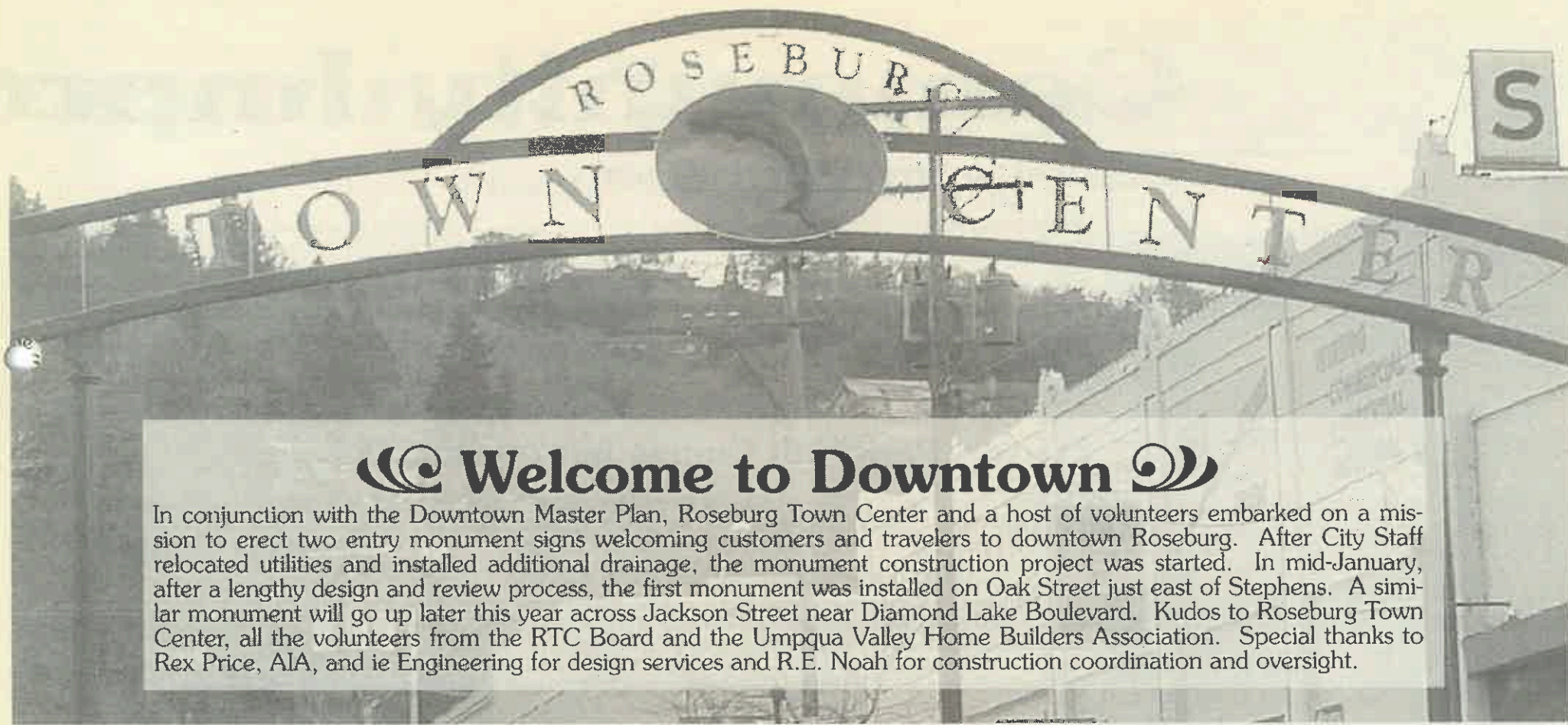
Councilor Ward I Phil Gale **Councilor Ward II** Bill Clifford

Councilor Ward II Dick Mitchell **Councilor Ward IV** Stacey Crowe

Councilor Ward II Paul Sykes **Councilor Ward IV** Shirley Neal

VOTING PRECINCTS

Ward I:	Ward II:	Ward III:	Ward IV:
Voting Precincts	Voting Precincts	Voting Precincts	Voting Precincts
38, 39, 40	36, 37, 47	44, 45, 46, 47A	41, 42, 43



🌀 Welcome to Downtown 🌀

In conjunction with the Downtown Master Plan, Roseburg Town Center and a host of volunteers embarked on a mission to erect two entry monument signs welcoming customers and travelers to downtown Roseburg. After City Staff relocated utilities and installed additional drainage, the monument construction project was started. In mid-January, after a lengthy design and review process, the first monument was installed on Oak Street just east of Stephens. A similar monument will go up later this year across Jackson Street near Diamond Lake Boulevard. Kudos to Roseburg Town Center, all the volunteers from the RTC Board and the Umpqua Valley Home Builders Association. Special thanks to Rex Price, AIA, and ie Engineering for design services and R.E. Noah for construction coordination and oversight.

CITIZEN POLICE ACADEMY 2002

The 2002 session of the Roseburg Police Department Citizen Police Academy begins on Wednesday, March 20th and applications are now being accepted. Roseburg residents and business owners will have a first hand opportunity to learn about law enforcement and the Roseburg Police Department. Academy participants will attend 40 hours of hands on and classroom training on topics that include community policing, officer recruitment and training, emergency communications, patrol, investigation, defensive tactics, firearms, high-risk situations and many others. The classes will be taught by officers who specialize in each of these areas and will include practical demonstrations and mock situations.

The purpose of the Citizen's Academy is to acquaint the general public with some of the issues, problems and tasks that police officers encounter. Students will hopefully walk away from the twelve sessions with a more realistic understanding of police work and the issues and problems they encounter every day. Participants will not be "trained police officers" but they will have a better idea of the "how and why" of law enforcement.

Tentatively, the Roseburg Citizen's Academy is scheduled for March 20th through May 22nd. Classes will be Wednesdays from 6:00 p.m. to 9:00 p.m. with a full day scheduled for Saturday, April 13th and Saturday, May 11th. Participants will be asked to commit to the full 10-week session which will culminate with a graduation ceremony. Anyone interested in more information can contact Sergeant Mark Nickel at the Police Department, 673-6633.

CONFINED SPACE RESCUE

The Roseburg Fire Department applied for and received a grant of \$34,533.00 to provide equipment to respond as a fully functional confined space rescue team. The equipment will be used to effect emergency rescue of people trapped in confined spaces as well as to train fire department, public works and water division members on confined space entry and rescue procedures as required by law. Confined Space Rescue services could also be extended to the public and general industry. In addition, a portion of the equipment will be used to improve our deployment of rapid intervention teams. These rescue teams are required to be available at all structure fires in the event of a building collapse.

Once the equipment required for confined space rescue is purchased, and after minimal refresher training, the Roseburg Fire Department will be in compliance with all statutory requirements for confined space entry.



REVOLVING LOAN FUND

The City of Roseburg is offering a loan program for existing businesses located within the city limits and urban growth area of Roseburg. This loan program was created by the City of Roseburg Economic Development Commission and City Council to encourage existing business growth and retention by offering low interest loans up to \$15,000.

Loans require applicants to meet the following criteria:

Job Creation - Suggested minimum of 1+FTE or 40 plus hours per week average after 90 days of operation.

Business Plan - outlining current and proposed FTE and revenue to cover additional employment and loan repayment.

Note and Security - at the time of loan application.

Purpose - to purchase capital improvements or materials; not to pay operating cost.

Business Longevity - In business for a minimum of 12 months and filed on tax return.

The loan applications will be processed by CCD Business Development Corporation and managed by a loan committee. If you own a business in Roseburg and have a business plan, you can contact the CCD Business Development Corporation located at 744 SE Rose Street in Downtown or by phone at 672-6728, to discuss a loan application.



Community Impr

Boston Street Improvements



Boston Street

Boston Street between Klamath and Commercial has a new look. Prior to the summer of 2001, this residential street was the only street in its neighborhood that did not have at least curbs. It was an unimproved street that continually challenged the public works street crew with drainage problems. Reconstructing the street was slightly challenging since many of the houses west of the street sat below street level, while those on the east side sat above street level. As part of the improvement, the street was widened and curb, gutter and sidewalks were installed on both sides of the street. A water main and new storm drainage facilities were also installed. This project tied into sidewalk improvements made in 2000 as part of the East Roseburg Railroad Crossing Reconstruction Project. Boston Street now has sidewalks its full length, from Diamond Lake Boulevard to Klamath Street.

Stewart Park Golf Course Improvements



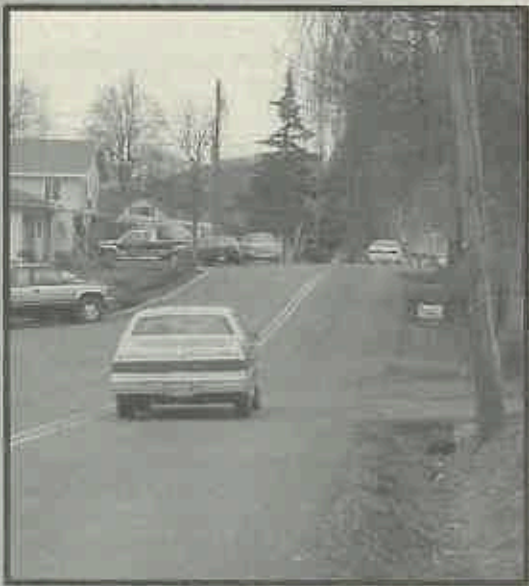
Stewart Park Golf

The Golf Commission for Stewart Park Golf Course has identified storm drainage as a high priority improvement project for the course. Funding for the improvement is generated from greens fees which can only be used to fund golf course projects. Over the years a number of potential drainage projects were placed on a project list and completed as funds permitted.

This past year the Commission approved a plan to improve the drainage on the number one fairway and construction began in October. The project included removal of the existing sod, placement of nearly 800 cubic yards of soil, installation of drain fields on both sides of the fairway and reseeding of the fairway. A local contracting company completed the majority of the construction, and City Golf Division Staff participated by refurbishing the irrigation system, seeding and fertilizing of the fairway. The grass has been growing in this winter, and the fairway will be open for play in early spring.

For information on tee times, call the pro shop at 672-4592.

Vine/Alameda/Oakland Improvement Project



Vine/Alameda/Oakland

Final design is nearly complete on the Vine/Alameda/Oakland Improvement Project. The streets slated for improvements as part of this project are Vine Street between Garden Valley Blvd and Alameda Street, Alameda Street between Vine Street and Sunset Lane, and Oakland Street from Stephens Street to Vine Street. Improvements will include widening these streets and installing curbs, gutters, sidewalks, storm drainage and a new water line on Vine Street.

Both Alameda and Vine streets are local collectors that serve the Cloverdale neighborhood. These streets are both busy and currently have no pedestrian facilities. The combination of narrow streets, no sidewalks and roadside ditches makes walking in the area a tricky situation. The City is excited to make these important safety improvements.

To facilitate the widening and sidewalk construction, the City needed to obtain right-of-way from twenty-seven of the adjoining property owners. The City has purchased all but one of these strips of property. City staff is currently in negotiations with the last remaining property owner and intends to move forward with the project. The bid opening for this project is tentatively scheduled for early March with construction scheduled to begin in the spring.

Eagles Park Renovation Project



Eagles Park

The complete renovation of Eagles Park occurred this past summer. The park was upgraded to provide a safer, more friendly environment for the neighbors, downtown shoppers, employees of downtown businesses and community residents.

Beginning in March 2000, a number of public meetings were held to discuss various options for the renovation of the park. Preliminary designs were drawn based on input from the meetings. The people attending the meetings considered the following attributes important:

- ◆ Make the park more urban in design
- ◆ Provide for high visibility into the park
- ◆ Allow access from Jackson and Lane Streets only
- ◆ Install a barrier between the neighboring apartments and the park
- ◆ Provide reasonable space between picnic tables and benches
- ◆ Provide a raised planter wall for seating
- ◆ Remove surface rooting trees
- ◆ Additional use of hardscape
- ◆ Provide an option for play equipment
- ◆ Provide a space for some form of art work
- ◆ Include the roses that are currently planted in the park
- ◆ Provide for a low maintenance facility

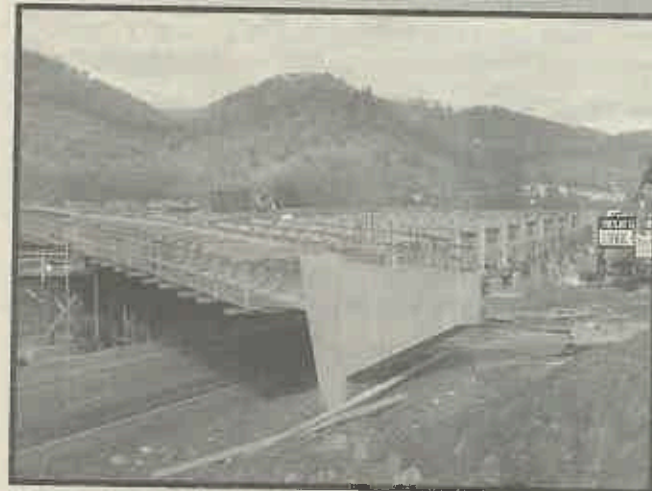
Based on this input, the consultants submitted four conceptual designs to the Park Commission for approval. The Commission chose a circular design concept which was approved by the City Council. The park renovation was completed in October.

Improvements/Projects

Stewart Parkway Overcrossing

Construction continues on the new Stewart Parkway Bridge over Interstate Five. The new structure will be wider than the existing bridge and will accommodate four travel lanes, bike lanes and sidewalks. A tremendous amount of material was needed to fill the approaches, especially on the west side of I-5. A hill located at the north end of the runway at the nearby Roseburg Regional Airport was used as the required "borrow site" for this material. The contractor was able to blast the hill and use this material to build up the approaches. Taking the elevation of this hill down is beneficial to the airport and worked out well for all involved. Noticeable progress was made recently when the beams were placed across the freeway. The contractor closed the freeway for four consecutive nights in December to place the concrete beams over I-5.

The contractor will concentrate on completing the north side of the bridge next. Traffic will be transferred from the old bridge to the north side of the new bridge while the south side of the new bridge is completed. Construction on the new bridge is expected to continue through the summer. Upon completion of the new structure, the old bridge will be removed.



Stewart Park Overcrossing

Main/Douglas ADA Parking Improvements

Visitors to either City Hall or the County Courthouse may have noticed some parking improvements along Douglas and Main Street. A joint project between the City and Douglas County has produced four new ADA accessible parking spaces, new sidewalk access ramps and related sidewalk and drainage improvements. Previously, the only disabled parking space had been located on Main Street which was at quite a steep grade and not very useable.

In an attempt to reduce through traffic and improve pedestrian visibility, the entrance to Main Street north of Douglas Avenue was narrowed. Main Street has not been a through street since construction of the new sally port two years ago. Main Street was also widened slightly to better enable vehicles to back out of the parking spaces near the County Surveyor's Office.

Early this fall, digital parking meters were installed on the 200 block of Jackson Street, as well as on Douglas Avenue. The new meters record time more accurately and have a digital display so customers can see exactly how much time is remaining. In addition, a few meters with a ten minute "free" time option were installed on Jackson Street to better serve short term customers and allow people without change an opportunity to make a quick stop without plugging the meter. We hope to continue replacing the remaining old-style meters over the next four or five years.



Main/Douglas Parking

Eastwood Park Renovation Plans Approved

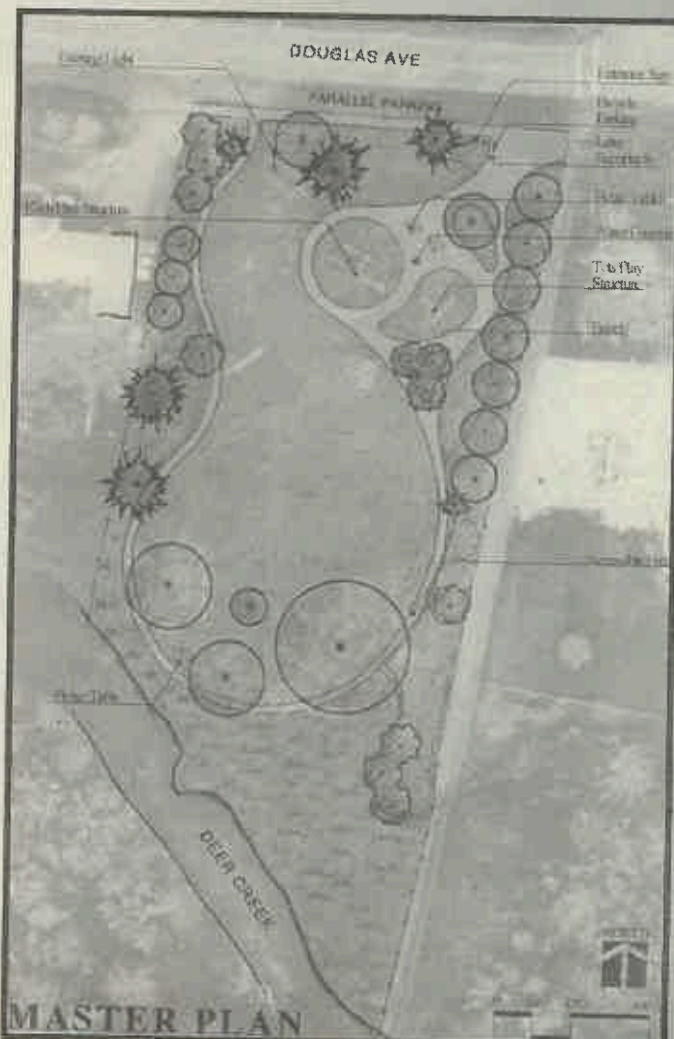
In January, the City Council approved a conceptual design to renovate Eastwood Park. The upgrading and renovation of the park was recommended in the City of Roseburg Parks Master Plan of 1997. The Parks Commission then prioritized the recommendations for design and construction as funding became available.

After designing and constructing Sunshine Park, Commercial Street Park and Eagles Park, conceptual designs were submitted for Eastwood Park. Three designs were presented to the Parks Commission for consideration. The designs were based on suggestions and ideas brought forward by neighbors, park users and other interested community members. Some of the suggestions and ideas were then incorporated into one final design. The park will be supplemented with new tree and landscape plantings at selected locations. A new curbside walk and parallel parking along Douglas Avenue are proposed in the overall park development plan. A new park entry, located at the northeast corner to promote street crossing at the intersection, is planned. The park is composed of two terraces. The upper terrace includes play areas, picnicking, a drinking fountain, park signage, existing lighting and finished lawns. The lower terrace, adjacent to Deer Creek, is seasonally flooded. The only improvements to this beautiful and natural riparian area is a five-foot wide, concrete paved path that connects the lower and upper terraces. The path will have a bench installed that can be removed during the winter and spring floods.

Construction of the improvements has not been scheduled at this time pending availability of funding.

Stephens Street Water Line Installation Project is Complete

Installation of 4,125 feet of new waterline along Stephens Street, between Garden Valley Boulevard and Wright Avenue, is complete. Construction began in early September 2001 and was finished in mid-January 2002. The project was initiated to replace old, undersized water lines with a new 12-inch diameter water main. The abandoned 4-inch and 6-inch diameter pipelines were too small to supply the current domestic water demands and fire protection requirements. The lines were also between 35 and 60 years old and had become a maintenance problem. This was a very difficult project to undertake due to the high traffic volume and large number of affected businesses. Construction was conducted primarily at night in an attempt to minimize impacts. The project was funded with water utility revenues. Public Works staff greatly appreciated the patience of area residents and businesses throughout the project. Plans are being evaluated to overlay this section of Stephens Street with new asphalt during the summer of 2002.



Eastwood Park

Improvements Set for Fir Grove!

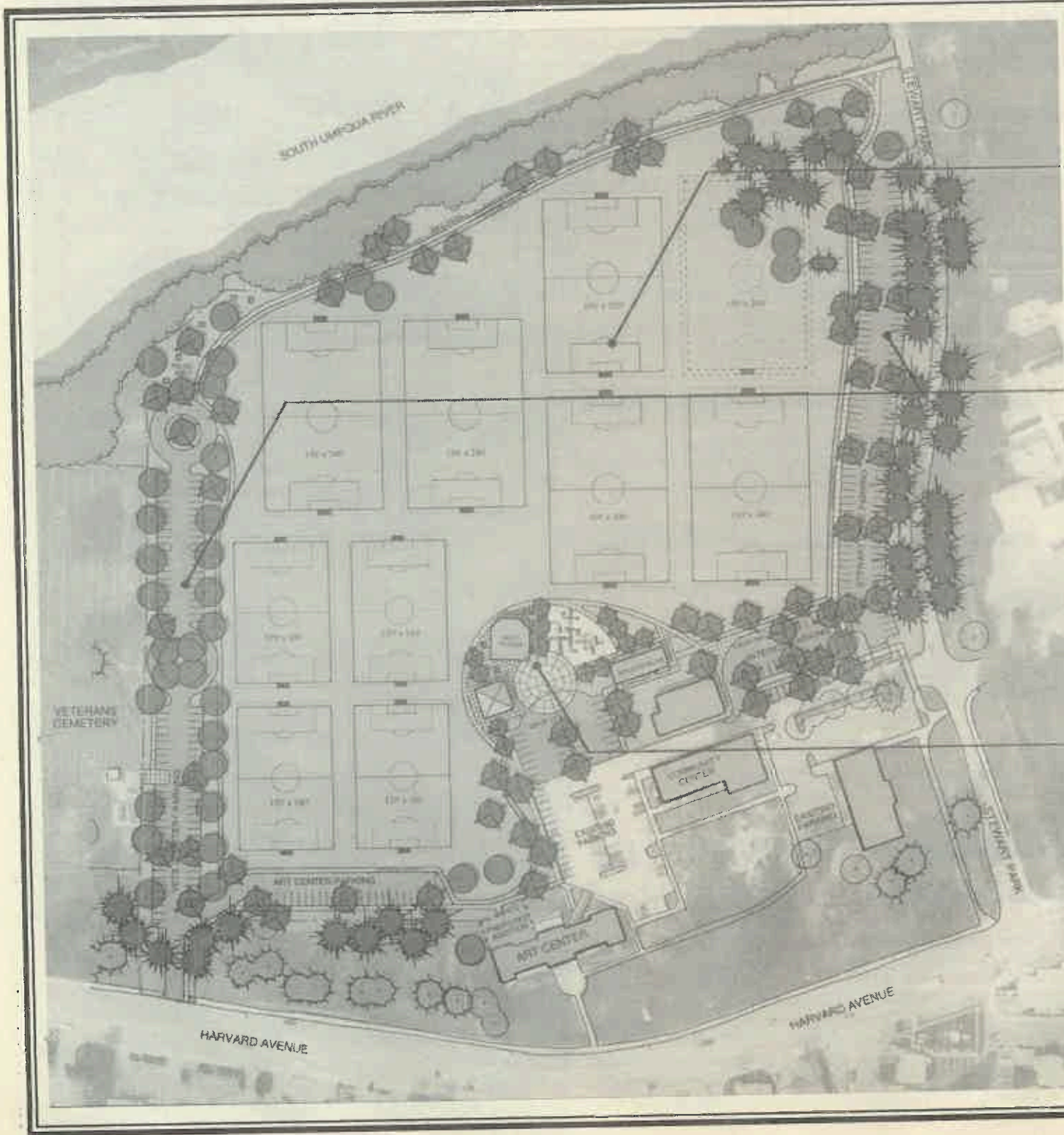
After a number of special public meetings, a conceptual design for improvements for the Fir Grove Section of Stewart Park was accepted by the Parks Commission and approved by the City Council. Organized park users, including the Roseburg Soccer Association, Umpqua Valley Arts Center, Roseburg High School, and representatives from the Veterans Administration, provided ideas and suggestions on ways to improve the park. From these suggestions design goals were presented to consultants for implementation in the final plan.

The primary goal in improving this existing 14.5-acre parkland is to provide as much quality turf field area for soccer play as possible. The field areas will be graded with a uniform slope, have sub-grade drainage installed where needed, be equipped with an automatically controlled irrigation system, and be seeded for a healthy, dense, uniform stand of turf-grass.

Another goal is to provide more vehicle parking without negatively

impacting play field layout or flexibility for use of the open space. New parking will be located along the west (Veterans) side and the east (Stewart Drive) side. Additional parking will be added to the existing internal parking areas, where appropriate, with the goal of providing easy and safe access and egress and player pick-up and drop-off zones. A focal point to the park will be developed around the existing restaurant and concession building. Proposed new improvements will include a plaza, shelters with picnic tables, seating, bicycle parking, and accessible children's play area(s) with play structures. Care will be taken to preserve existing trees and landscape and supplement passive areas with perimeters with new tree and landscape plantings. A jogging path, river overlook, and pedestrian access to the Arts Center from the west parking is also included in the design.

This project has not been scheduled for construction pending availability of funding.



STEWART PARK FIR GROVE SECTION CITY OF ROSEBURG

ATHLETIC FIELDS

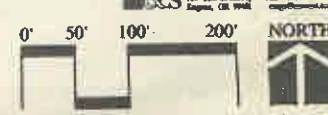
- Flexible Open Space
- Orient Fields North / South (when possible)
- Provides Several Field Layout Options
- Fields Shown:
 - Five Medium Sized Soccer Fields (Junior High) (150' x 220/240')
 - Four Small Sized Soccer Fields (Elementary) (120' x 180')

PARKING AREAS

- Vets Cemetery Parking
 - Saves Existing Trees
 - Celebrates Entrance to Vets Cemetery
 - Provides Connection to Arts Center
 - Provides 96 Additional Parking Spaces
- Stewart Drive Parking
 - Saves Existing Trees
 - Reconnects Bike Path
 - Minimal Impact to Athletic Fields
 - Provides 117 Additional Parking Spaces
- Interior Parking
 - Saves Existing Tree
 - Minimal Impact to Athletic Fields
 - Provides 29 Additional Parking Spaces
- Art Center Parking
 - Protects Existing Trees
 - Provides Parking for Art Center Addition
 - Provides 22 Additional Parking Spaces

PARK CENTER

- Drop-off Zone
- Regional Play Area
- Concessions
- Restrooms
- Group Shelters
- Picnic Tables



JANUARY 9, 2002
MASTER PLAN
WITH YOUTH SOCCER FIELDS

ORDINANCES & RESOLUTIONS

The following are the Ordinances and Resolutions passed by the Roseburg City Council during the last six months of calendar year 2001.

"ORDINANCE": A written directive or act of a governing body. Ordinances have the full effect of law within the local government's boundaries, provided that they do not conflict with a state statute or constitutional provision. An ordinance has two readings at Council prior to being voted on by the Council. An ordinance becomes effective 30 days after the second reading, unless an emergency is declared which enables the Ordinance to become effective immediately.

Ordinance No. 3096: "An Ordinance Declaring the Annexation and Amending the Zoning by Consent of the Property Owners of Land Known as the Larsen and Loosley Development LLC Properties Abutting the Present City Limits of the City of Roseburg, Oregon; Withdrawing Property From Douglas County Fire District No. 2; Amending the Roseburg Zoning Map; and Directing the Filing of a Transcript with the Secretary of State", adopted August 13, 2001.

Ordinance No. 3097: "An Ordinance For a Quasi-Judicial Amendment to the Roseburg Zoning Map and Applying Conforming Zoning to Property Known as Reitmann Enterprises Quality Fence Property Located West of Fulton Street and South of Diamond Lake Boulevard", adopted August 27, 2001.

Ordinance No. 3098: "An Ordinance Amending Section 8.2.140, Chapter 8.02, Title 8, of the Roseburg Municipal Code Regarding Roller Skates, In-Line Skates, Skateboards, Bicycles and Other Recreational-Type Devices", adopted August 27, 2001.

Ordinance No. 3099: "An Ordinance Amending the Roseburg Comprehensive Plan Map and Concurrent Zone Change for Property Known as the Umpqua Dairy Parking Lot Extension, Located South of the Umpqua Dairy Parking Area, West of SE Mill Street at the Westerly Terminus of SE Rice Avenue", adopted December 10, 2001.

"RESOLUTION": An order of a governing body; requires less legal formality than an Ordinance. Statutes or City Charter specify which actions must be by Ordinance and which may be by Resolution. For cities, revenue-raising measures such as taxes, special assessments and service charges are always imposed by Ordinance; fee amendments, however, are made by Resolution. Prior to adoption, a Resolution only needs to be read before the City Council once (by title only, if no member of the Council objects).

Resolution No. 2001-10: "A Resolution Designating U.S. National Bank Lease Purchase Agreement as "Bank Qualified" and Designating Small Issuer Exception to Arbitrage Rebate", adopted June 28, 2001.

Resolution No. 2001-11: "A Resolution Amending Resolution No. 92-13 Regarding the City of Roseburg Fee Schedule - Airport Facilities," adopted July 9, 2001.

Resolution No. 2001-12: "A Resolution Authorizing the Institution of Proceedings to Acquire Property Through Negotiations and Other Lawful Procedures Up To and Including the Use of Eminent Domain For the Acquisition of Property Interests Along the West Side of the Roseburg Regional Airport, Commonly Known as Town and Country Mobile Home Park, For the Purpose of Acquiring Non-conforming and Incompatible Use Properties for Expansion of the Roseburg Regional Airport", adopted July 23, 2001.

Resolution No. 2001-13: "A Resolution Exempting From Competitive Bid Acquisition of a Storm Sewer Camera Tractor Through a Designated RST Regional Supplier", adopted August 13, 2001.

Resolution No. 2001-14: "A Resolution Authorizing and Directing the City Manager to Purchase Two Parcels of Land For the Newton Creek Wetland Corridor and Providing For Related Matters", adopted September 10, 2001.

Resolution No. 2001-15: "A Resolution Amending Resolution No. 92-13 Regarding the City of Roseburg Fee Schedule Establishing Fees Associated With Municipal Court Collections", adopted September 24, 2001.

Resolution No. 2001-16: "A Resolution Exempting From Competitive Bid Acquisition of Parking Meter Replacement Mechanisms Through POM Incorporated", adopted September 24, 2001.

Resolution No. 2001-17: "A Resolution Authorizing 2001-2002 Budget Appropriation Transfers", adopted November 26, 2001.

Resolution No. 2001-18: "A Resolution Authorizing the City Manager of the City of Roseburg to Execute and Endorse an Amendment to the Agreement With the League of Oregon Cities Governing the League Status as a Unit of Local Government, Similar to Other Cooperative Intergovernmental Agencies in Which Cities Create and Participate," adopted November 26, 2001.

Resolution No. 2001-19: "A Resolution Rescinding Section 1 of Resolution No. 95-18 Regarding Issuance of Graffiti Night Permits", adopted December 10, 2001.

Complete copies of, or more information regarding City Ordinances and Resolutions may be obtained through the City Recorder's Office on the third floor of City Hall, 900 SE Douglas Avenue, Roseburg; by calling 541/672-7701, extension 219 or requested via e-mail sent to scox@ci.roseburg.or.us

Shop Facilities Relocation

The City Maintenance Shops will soon be moving. Currently, the street maintenance shop is located at the corner of Court and Rose. The water maintenance shop is located at the corner of Bogard and Fleser. The parks maintenance shop is located at Stewart Park. In the near future, all three will be centrally located. This should facilitate a better use of equipment, space and manpower.

With City Council's approval, City staff began looking at alternatives for relocating the maintenance facilities early in 2001. The current facilities have become outdated. There has also long been a concern about the location of the street maintenance facility. The current facility is located next to Deer Creek. Flooding on this site has continually been a problem over the years. During the worst of the floods, up to six feet of water has been in the buildings. In order for public works crews to respond to flood situations, they would have had to move the equipment out of this complex to higher ground before being able to assist in emergency operations.

City staff was in the process of investigating several sites around the City as possible future locations when Roseburg Forest Products contacted them. RFP has a facility on Fulton Street off Diamond Lake Boulevard that they will be vacating once their new facility is finished in Green. After some negotiation and research on the site, a deal was struck between the City and RFP. The City has now purchased the property from Roseburg Forest Products and will move in once they have vacated it. This is expected to occur this summer.

Tree Basics!

Planting & Care ~ Reprinted from January/February 2002

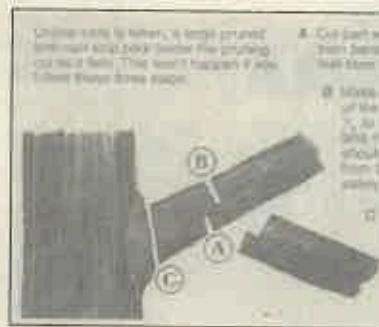
Arbor Day, an official publication of the National Arbor Day Foundation.



Q: I have a large hickory on my property that I notice has some dead limbs. The tree is located where it poses no danger to people beneath it, so my question is: Does it matter if the dead branches are allowed to remain on the tree?

A: Dead limbs usually pose a safety hazard, but even if that is not a factor in your case, the dead wood can be a danger to your tree's health. This is because as long as the dead limb is on the tree, there is no way for the tree's living tissue to seal off the area.

If rot develops in the dead wood, which is likely, the rot-causing fungus has a good opportunity to spread into the otherwise healthy trunk or adjacent limb. When arborists prune dead wood from a crown, they appropriately call the process 'crown cleaning'. If you know which limbs are dead this is something you or an arborist can do during the winter when other landscaping chores are at low ebb. Otherwise, wait until leaves are on the tree and the dead limbs are more obvious.



Whether pruning live branches or dead wood, it is important to make your cut at the right place on the branch. This enables the tree to set up a chemical defense barrier and eventually seal the pruning wood.



CITY MEETING CALENDAR

City Commissions conduct regular public meetings according to the following schedule:

Airport Commission	4th Tuesday	noon	Conference Room	Historic Resources Review	1st & 3rd Thursday	noon	Conference Room
City Council	2nd & 4th Monday	7:00 p.m.	Council Chambers	Parks & Recreation	1st Wednesday	7:30 a.m.	Conference Room
Downtown Development	3rd Wednesday	8:00 a.m.	Conference Room	Planning Commission	1st & 3rd Monday	7:00 p.m.	Council Chamber
Economic Development	2nd Tuesday	noon	Conference Room	Public Works Commission	2nd Thursday	noon	Conference Room
Golf Course Commission	3rd Monday	noon	Conference Room	Utility Commission	2nd Thursday	3:30 p.m.	Conference Room

Depending upon the number of issues needing attention by the Commissions, special meetings may be scheduled or regular meetings may be cancelled. Upon final preparation summaries of meeting agendas are forwarded to the News Review for inclusion in the public meeting calendar and are available at City Hall. Prior to attending a meeting, you may wish to call City Hall to ensure the meeting is going to be held as scheduled.

Call First Before You Excavate

Excavation on the City of Roseburg's hillsides is becoming more prevalent as less flat land on the valley floor is available for development. The views are great... But what about the stability of that hillside? Or the impact excavation may have to adjacent properties such as drainage issues or erosion? In 1999, the City adopted site development standards and a permitting process for excavation, fill placement and hillside development.

There are several reasons that the Community Development Department requires a permit for excavation, fill placement, removal of trees or ground cover.

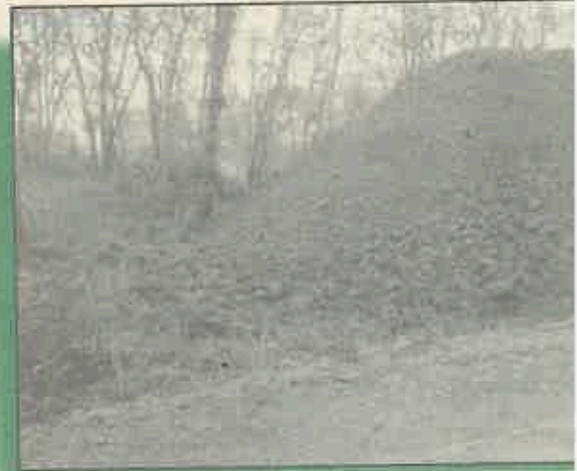


What could happen in this situation?

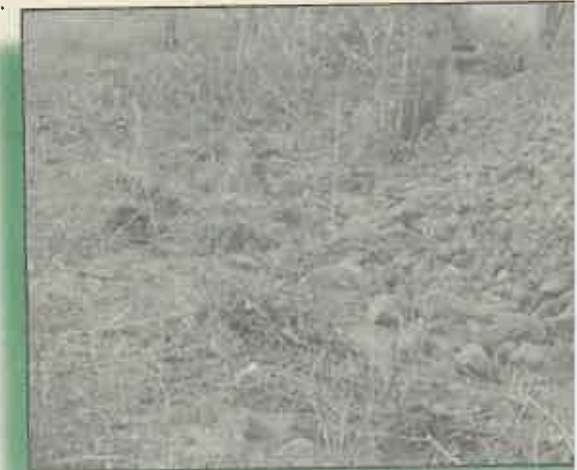
These include:

- The proposed excavation would result in clearing 3000 or more square feet.
- The property contains any continuous presence of water that would be disturbed such as a spring, stream, wetland, etc.
- The volume of fill or excavated material exceeds 5 cubic yards for every 1000 square feet of land area.
- Any portion of the hillside has a slope of 12% or greater or is identified as a Geo-hazard Area.

Give the Community Development Office a phone call before you start your project. Working without a permit can cost the developer extra time and money. Let us take a look at the project first so it doesn't end up like this...



The above fill placement



... significantly impacted this hillside

Roseburg Municipal Code

The entire Roseburg Municipal Code can now be viewed via the Internet. Although the City plans to eventually have this as a direct link to its own web page, until such time, the Code can be accessed by logging on to www.bpcnet.com or www.bpcnet.com/codes/roseburg

Once at the site, select "on-line codes" (from the upper right-hand side of the screen); next click on "Oregon" and then on "Roseburg". You can search the Code by title by simply clicking on the selected title, or you can do a word search. For example, to search for City regulations relating to noise, click on "search"; type "noise" in the box & hit return. This will produce a list of all Code sections containing the word "noise". To view the individual section, simply click on the section and the text will appear.

If you desire, you can also print the section by selecting "file"; then "print". To have this access at your fingertips, save this site as one of your "favorites"!

If you have any questions related to the Roseburg Municipal Code, please feel free to contact City Recorder Sheila R. Cox at 541/672-7701, extension #219.

CITIZEN SUGGESTION BOX

What would YOU like to see published in the next CITY CONNECTION?

Please return suggestions to: City Manager's Office,
900 SE Douglas, Roseburg OR 97470.
Phone 672-7701/FAX 673-2856
Email ddavidson@ci.roseburg.or.us

CITIZEN'S GUIDE TO CITY COUNCIL MEETINGS

Regular City Council meetings are held the second and fourth Monday of each month at 7:00 p.m. in the City Hall Council Chambers at 900 SE Douglas Avenue. Agency representatives for upcoming Council meetings are available in the City Recorder's Office the Friday prior to the meeting. Current agendas are also available at the meeting. In rare instances, the Council may deal with agenda items out of order.

Citizens attending Council meetings may speak on any item on the agenda, unless that item is the subject of an executive session or a public hearing where comments have been heard and the hearing has closed. Citizens may speak when recognized by the chair and are required to give their name and address for the official record. A minimum of 12 hours notice should be provided if you are submitting handouts to Council.

Toward the beginning of each meeting, time is set aside for **Audience Participation**. During this time, anyone wishing to address the City Council concerning items of interest included in the agenda may do so. The person addressing the Council shall, when recognized, give his/her name and address for the record. All remarks shall be directed to the whole City Council. The Council reserves the right to delay any action, if required, until such time when they are fully informed on the matter.

Written minutes, not verbatim transcripts, and audio tapes are taken for all public meetings.