

ROSEBURG



parks
AND
recreation

PARK

Scavenger Hunt



PARK Scavenger Hunt

HOW MANY ROPE BALLS AT BEULAH PARK?

FIND THE PLAQUE ON A ROCK AT MICELLI PARK. WHAT YEAR IS SHOWN?

HOW MANY BLUE HAND HOLDS ON THE CLIMBING WALL AT EASTWOOD PARK?

WHAT TWO ANIMALS ARE PICTURED ABOVE THE STEERING WHEEL AT EASTWOOD PARK?

WHAT COLOR IS THE SLIDE AT BEULAH PARK?

HOW MANY BLACK BENCHES SURROUND THE PLAYGROUND AT STEWART PARK?

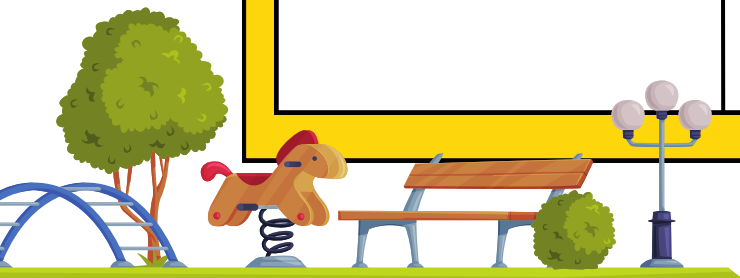
WHAT COLOR IS THE SPIDERWEB TOWER ROPE AT STEWART PARK?

WHAT DO THE TALLEST POLES LOOK LIKE AT MICELLI PARK?

HOW MANY SWINGS ARE AT STEWART PARK?

VISIT THESE 4 PARKS TO COMPLETE THE HUNT:

- BEULAH PARK
- EASTWOOD PARK
- MICELLI PARK
- STEWART PARK



Name _____

Age _____

Parent/Guardian _____

Phone # _____

Favorite
Roseburg Park _____

ANSWERS WILL BE
POSTED TO THE
ROSEBURG PARKS &
RECREATION FACEBOOK
PAGE ON JUNE 1.

Questions:
parks@cityofroseburg.org
(541) 492-6730

WINNERS WILL BE
CONTACTED ON JUNE 1
TO COLLECT THEIR
PRIZES FROM CITY
HALL.

PARK Scavenger Hunt

ANSWER THE 9 QUESTIONS
INSIDE AND DROP OFF BY
MAY 31, 2023 AT:

- CITY HALL (900 SE DOUGLAS AVE.)
M-F 8AM-12PM, 1PM-5PM
- ROSEBURG PUBLIC LIBRARY
T-TH 10AM-6PM, F-SAT 10AM-2PM

OR EMAIL TO:

PARKS@CITYOFROSEBURG.ORG

