

SUNSHINE PARK TRAILS EXPANSION

GENERAL NOTES:

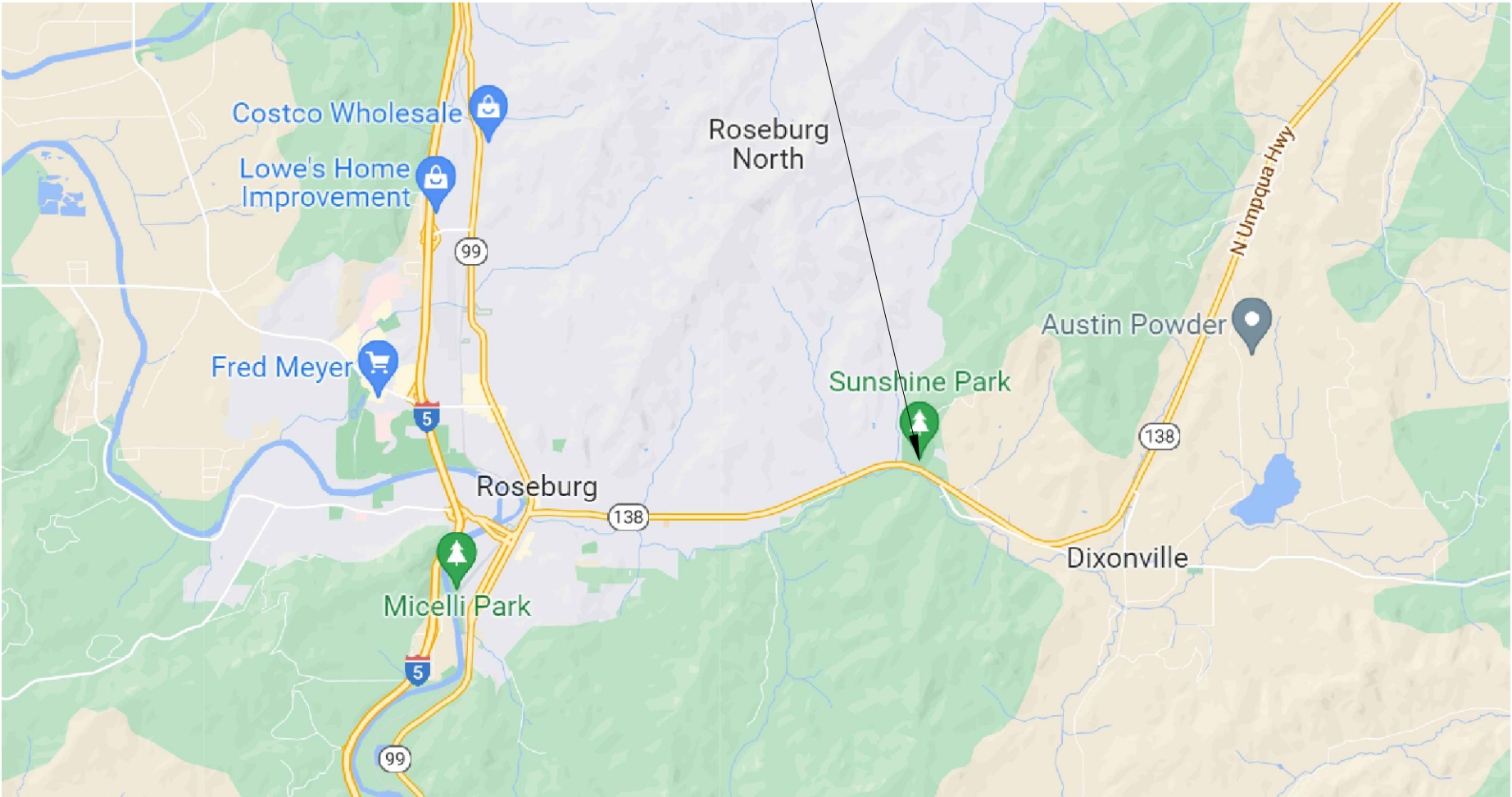
- 1. THE 2024 EDITION OF THE OREGON STANDARD SPECIFICATIONS FOR CONSTRUCTION PREPARED BY THE OREGON DEPARTMENT OF TRANSPORTATION AND THE AMERICAN PUBLIC WORKS ASSOCIATION OREGON CHAPTER WILL BE CONSIDERED THE STANDARD SPECIFICATIONS.
- 2. THE CONTRACTOR SHALL REPLACE ANY AND ALL SURVEY MONUMENTS WHICH ARE AFFECTED BY THE CONSTRUCTION. ALL MONUMENTS WILL BE RESET BY A LICENSED LAND SURVEYOR AT CONTRACTORS EXPENSE.
- 3. LOCATIONS SHOWN ON ENGINEERING DRAWINGS ARE APPROXIMATE. CONTRACTOR IS RESPONSIBLE FOR STAKING TRAIL ROUTES. KML FILE AND SHAPE FILE WILL BE SUPPLIED TO CONTRACTOR BY THE CITY.
- 4. CONTRACTOR TO FIELD VERFIY CULVERT AND ARMORING LOCATIONS AND LENGTHS.
- 5. CONTRACTOR RESPONSIBLE FOR OBTAINING ALL REQUIRED PERMITS FOR WORKING IN PUBLIC RIGHT-OF-WAYS. (I.E. ODOT, CITY, COUNTY).

PROJECT # 20GR21


DRAWING INDEX

DWG NO.	SHEET NO.	DESCRIPTION
GENERAL		
COV	1	COVER
C1	2	SITE PLAN
C2	3	TOPOGRAPHY – WEST SIDE
C3	4	TOPOGRAPHY – EAST SIDE
D1	5	TRAIL SECTIONS
D2	6	CULVERT AND ARMORING

PROJECT LOCATION



VICINITY MAP
Not To Scale



Know what's below.
Call before you dig.

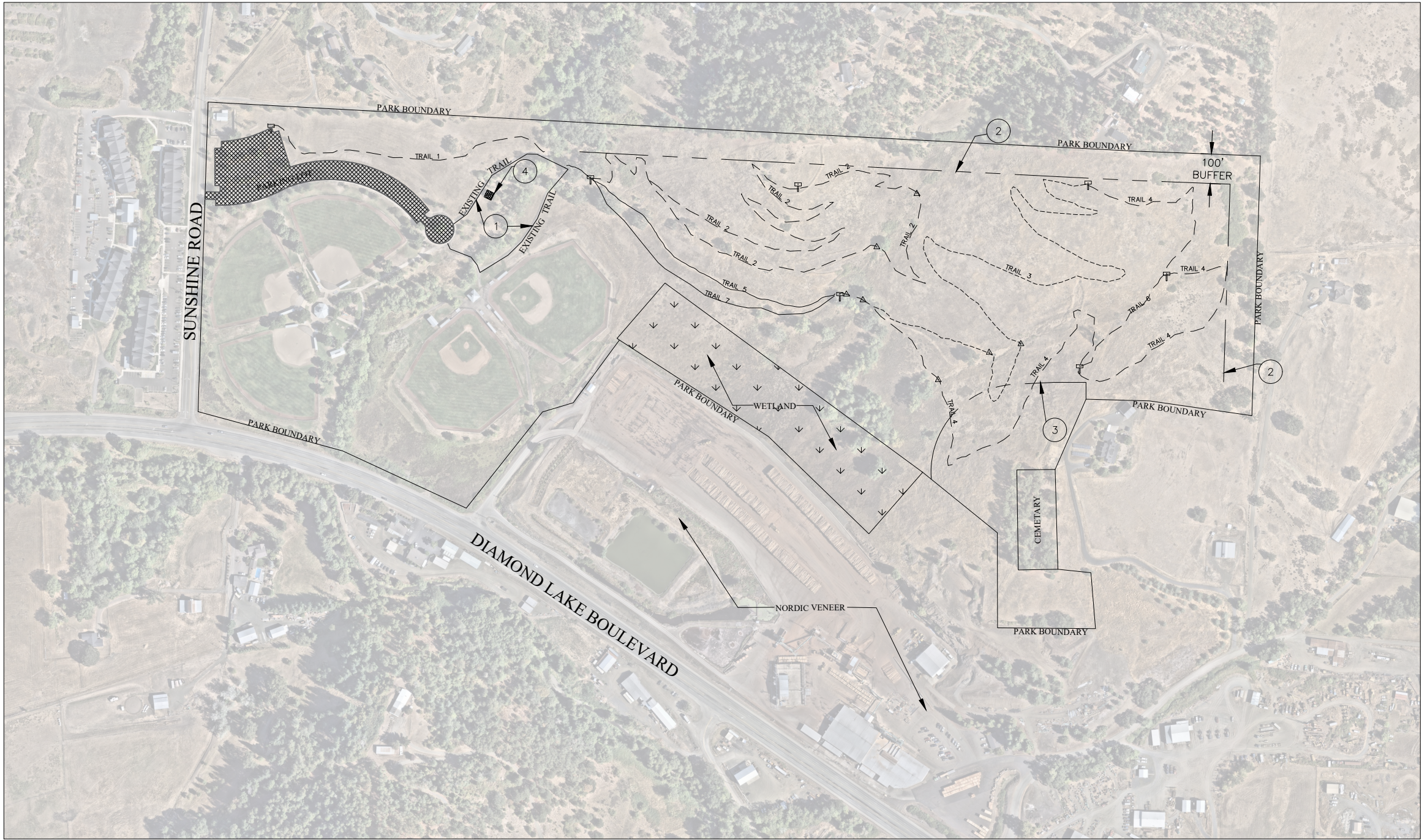
ATTENTION:
OREGON LAW REQUIRES YOU TO FOLLOW RULES ADOPTED BY THE OREGON UTILITY NOTIFICATION CENTER. THOSE RULES ARE SET FORTH IN OAR 952-001-0010 THROUGH 952-001-0090. YOU MAY OBTAIN COPIES OF THE RULES BY CALLING THE CENTER AT (503) 232-1987.



DESIGNED:	DRAWN:	REVISIONS		
	AB	REV#	DESCRIPTION	DATE
<div><div>LINE IS 1 INCH AT FULL SCALE</div><div>IF NOT 1-INCH - SCALE ACCORDINGLY</div></div>				

CITY OF ROSEBURG
Public Works Department
900 SE Douglas Ave.
Roseburg OR 97470

SUNSHINE PARK TRAILS EXPANSION	PROJECT NO. 20GR21	DRAWING NO. COV
GENERAL COVER	DATE DEC 2025	SHEET NO. 1 OF 6



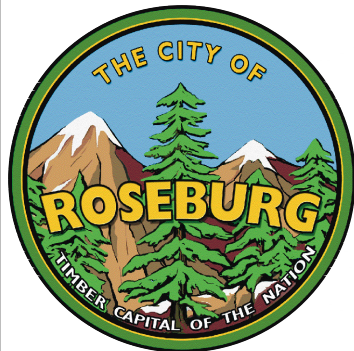
NO. SITE NOTES

- 1 EXISTING TRAILS TO REMAIN
- 2 NO TRAILS WITHIN 100 FT BUFFER
- 3 NO HEAVY MACHINERY (EXCAVATORS, BACKHOES, BULLDOZERS, TRENCHING, AND EARTHMOVING EQUIPMENT) WITHIN 300 FT BUFFER
- 4 EXISTING GAZEBO

TRAIL SEGMENT #	LENGTH (FT)
1	1100
2	4600
3	3400
4	3500
5	1100
6	500
7	1100

LEGEND

- UNIVERSAL ACCESS TRAIL
- BEGINNER (CLASS 2)
- BLUE FLOW (CLASS 3)



DESIGNED:

DRAWN:
AB

LINE IS 1 INCH
AT FULL SCALE
IF NOT 1-INCH - SCALE ACCORDINGLY

REVISIONS		
REV#	DESCRIPTION	DATE

CITY OF ROSEBURG
Public Works Department
900 SE Douglas Ave.
Roseburg OR 97470

SUNSHINE PARK TRAILS
EXPANSION

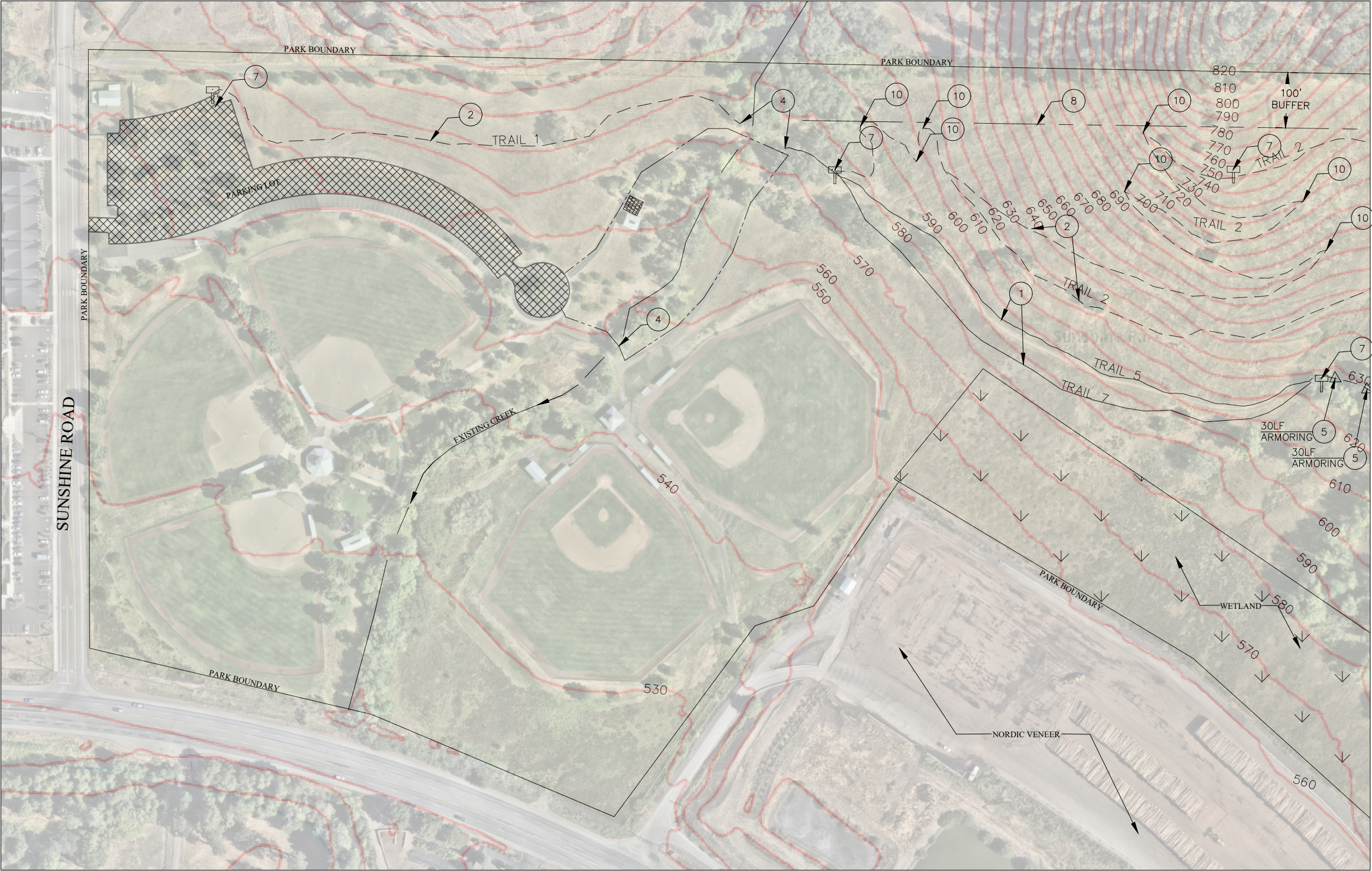
CONSTRUCTION
SITE PLAN

PROJECT NO.
20GR21

DATE
DEC 2025

DRAWING NO.
C1

SHEET NO.
2 OF 6



NO. CONSTRUCTION NOTES

- 1 CONSTRUCT UNIVERSAL ACCESS TRAIL. REFER TO TABLE ON SHEET D1
- 2 CONSTRUCT BEGINNER (CLASS 2) TRAIL. REFER TO TABLE ON SHEET D1.
- 3 CONSTRUCT BLUE FLOW (CLASS 3) TRAIL. REFER TO TABLE ON SHEET D1.
- 4 EXISTING BRIDGE TO REMAIN. DO NOT DISTURB
- 5 CONSTRUCT TRAIL ARMORING. REFER TO DETAIL 2 ON SHEET D2.
- 7 TRAILHEAD/HUB LOCATIONS
- 8 NO TRAIL WITHIN 100 FT BUFFER
- 10 CONSTRUCT IN-SLOPED TURN. REFER TO DETAIL 1 ON SHEET D.

LEGEND

- UNIVERSAL ACCESS TRAIL
- BEGINNER (CLASS 2)



DESIGNED:	DRAWN:
	AB
LINE IS 1 INCH AT FULL SCALE IF NOT 1-INCH - SCALE ACCORDINGLY	

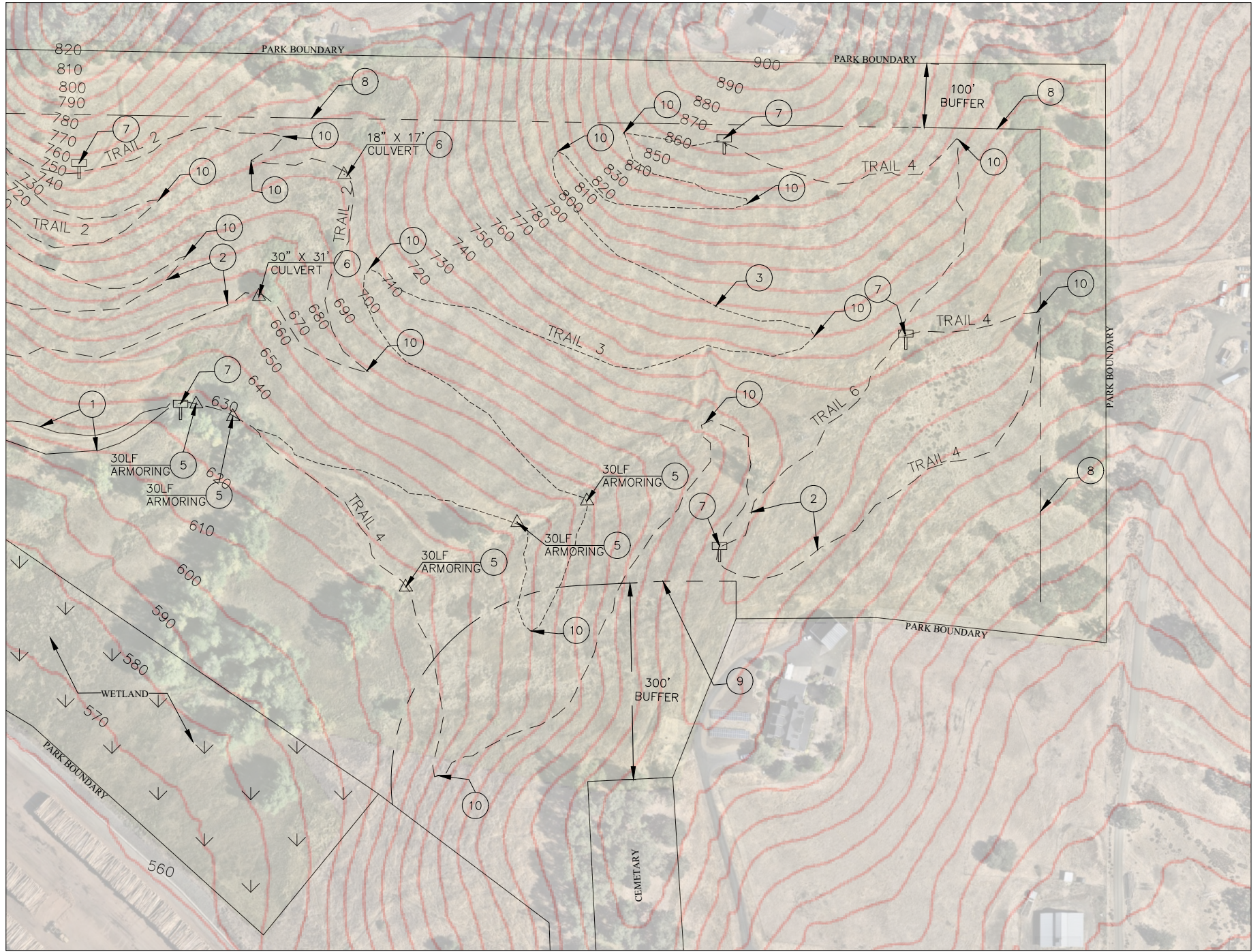
REVISIONS		
REV#	DESCRIPTION	DATE

CITY OF ROSEBURG
Public Works Department
900 SE Douglas Ave.
Roseburg OR 97470

SUNSHINE PARK TRAILS EXPANSION
CONSTRUCTION TOPOGRAPHY- WEST SIDE

PROJECT NO.	DRAWING NO.
20GR21	C2
DATE	SHEET NO.
DEC 2025	3 OF 6





NO. CONSTRUCTION NOTES

- 1. CONSTRUCT UNIVERSAL ACCESS TRAIL. REFER TO TABLE ON SHEET D1.
- 2. CONSTRUCT BEGINNER (CLASS 2) TRAIL. REFER TO TABLE ON SHEET D1.
- 3. CONSTRUCT BLUE FLOW (CLASS 3) TRAIL. REFER TO TABLE ON SHEET D1.
- 4. EXISTING BRIDGE TO REMAIN.
- 5. CONSTRUCT TRAIL ARMORING. REFER TO DETAIL 2 ON SHEET D2.
- 6. CONSTRUCT CULVERT CROSSING REFER TO DETAIL 1 ON SHEET D2.
- 7. TRAILHEAD/HUB LOCATIONS
- 8. NO TRAIL WITHIN 100 FT BUFFER
- 9. NO HEAVY MACHINERY (EXCAVATORS, BACKHOES, BULLDOZERS, TRENCHING, AND EARTHMOVING EQUIPMENT) WITHIN 300 FT BUFFER OF CEMETARY
- 10. CONSTRUCT IN-SLOPED TURN. REFER TO DETAIL 1 ON SHEET D.

LEGEND

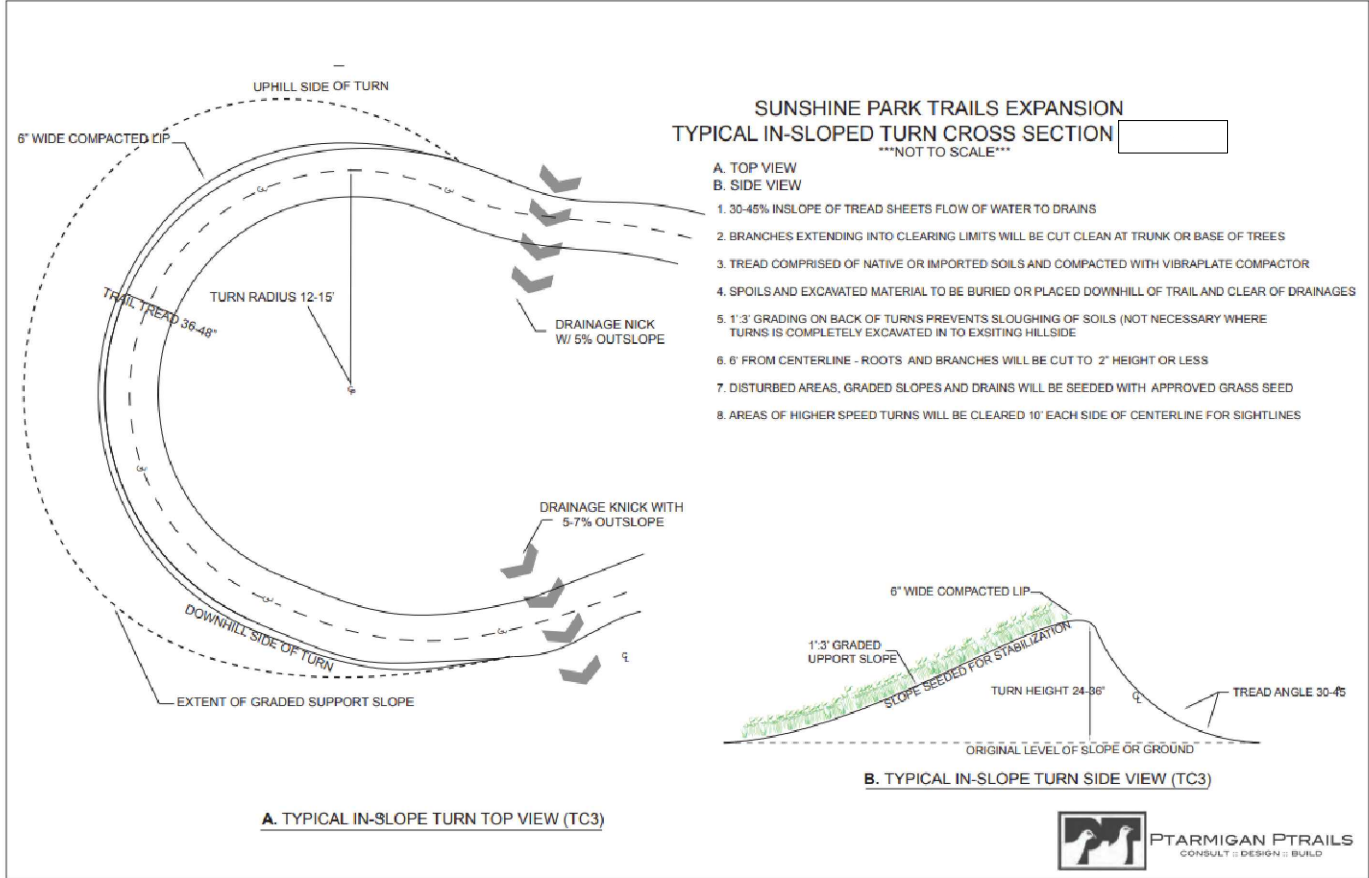
- UNIVERSAL ACCESS TRAIL
- BEGINNER (CLASS 2)
- BLUE FLOW (CLASS 3)



DESIGNED:	DRAWN:	REVISIONS		
	AB	REV#	DESCRIPTION	DATE
<div>LINE IS 1 INCH AT FULL SCALE IF NOT 1-INCH - SCALE ACCORDINGLY</div>				

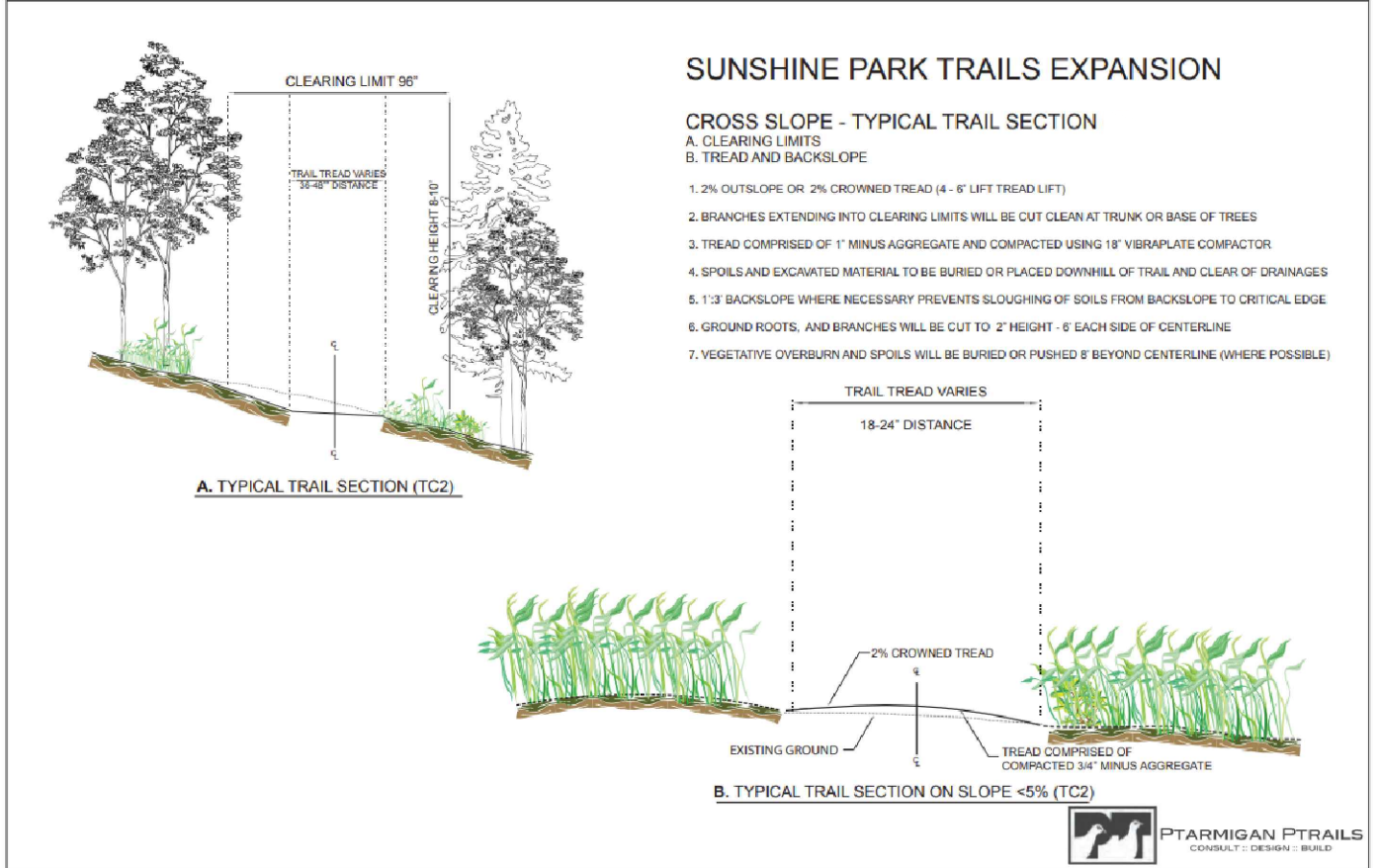
CITY OF ROSEBURG
Public Works Department
900 SE Douglas Ave.
Roseburg OR 97470

SUNSHINE PARK TRAILS EXPANSION	PROJECT NO. 20GR21	DRAWING NO. G3
GENERAL TOPOGRAPHY - EAST SIDE	DATE DEC 2025	SHEET NO. 4 OF 6



IN-SLOPED TURN TYPICAL
SCALE: NTS

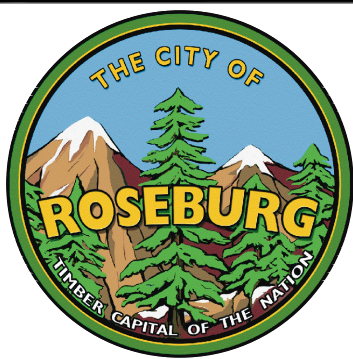
1
D1



TYPICAL TRAIL SECTION
SCALE: NTS

2
D1

TRAIL CLASSIFICATION	TRAIL #	TOTAL LINEAR FEET	TRAIL DESCRIPTION	TRAIL SURFACING	EXCAVATION
UNIVERSAL ACCESS	5	1100	The universal access trails are designed to meet Americans with Disabilities Act (ADA) standards, ensuring accessibility for wheelchair users. These trails will have a minimum tread width of 5' and maintain a maximum running slope of 5% or less and max of 2% cross slope or less, creating an inclusive and accessible trail experience for all users.	TYPE 1 - compacted with 3" lift of 1.5" minus crushed aggregate and a 3" lift of 3/4" minus crushed aggregate.	TYPE 1 - Clearing grubbing for 8' clearing limit. Trail tread to be excavated 6" deep
	7	1100			
BEGINNER (CLASS 2)	1	1100	These trails are characterized by gentle grade changes, mild slopes, and winding hillside routes that deliver a traditional trail experience. The average slope will be around 5% with short stretches reaching a maximum of 15%. The trail tread width will typically range between 3' and 4'. The surface will consist of compacted native soil mixed with aggregate material to help reduce erosion and manage water runoff. These lower-speed trails are intended for a broader mix of users and will connect to both the west parking area and other trail segments.	TYPE 2 - Trail tread will be native material and 1.5" of 1" minus crushed aggregate compacted together with 18" viberplate.	TYPE 2 - Clearing grubbing for 8' clearing limit. Trail tread to be graded for an average running slope of 5% and maximum of 15%. Excavate in-sloped turns as indicated on site plan. TYPE 3 - Clearing grubbing for 8' clearing limit. Trail tread to be graded for an average running slopes of 7-9 % and maximum 20%. Excavate in-sloped turns as indicated on site plan.
	2	4600			
	4	3500			
BLUE FLOW (CLASS 3)	6	500			
	3	3400	Flow trails are designed mainly for mountain biking and trail running, offering a smoother experience with more frequent grade changes, banked turns, and moderately steeper slopes that support faster speeds. Positioned farther from the trailhead to minimize overlap between hikers and faster users, these trails average slopes between 7-9% with short sections reaching up to 20%. typical tread widths will be 3'.		



DESIGNED:

DRAWN:
AB

LINE IS 1 INCH
AT FULL SCALE
IF NOT 1-INCH - SCALE ACCORDINGLY

REVISIONS		
REV#	DESCRIPTION	DATE

CITY OF ROSEBURG
Public Works Department
900 SE Douglas Ave.
Roseburg OR 97470

SUNSHINE PARK TRAILS
EXPANSION

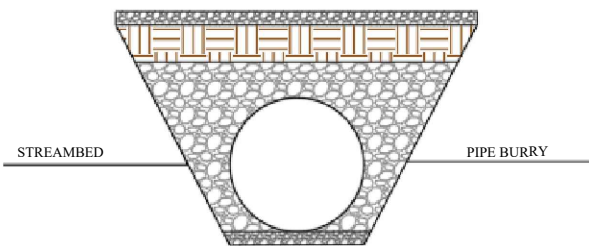
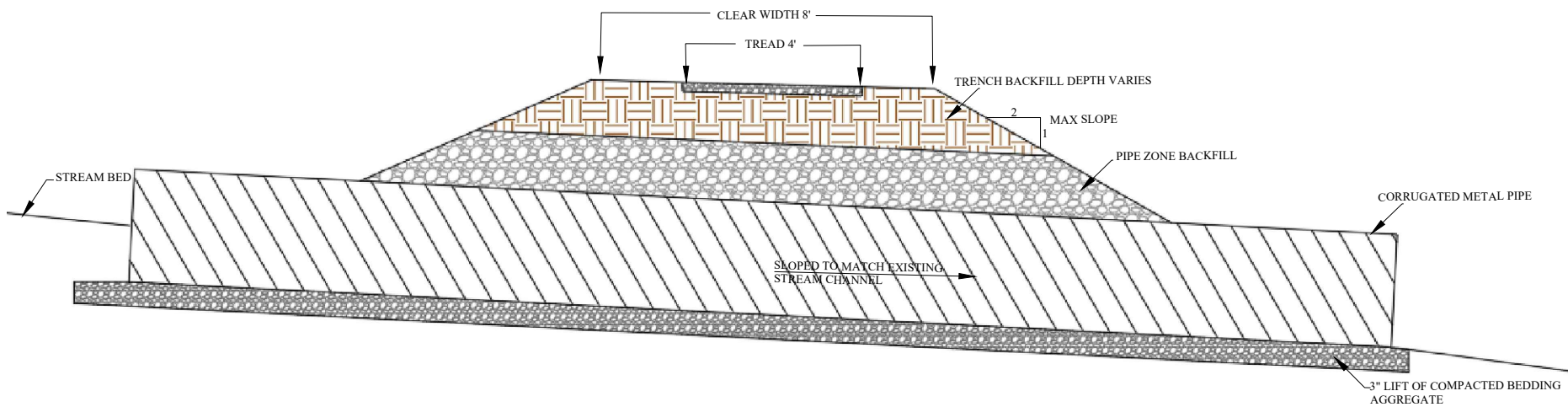
DETAIL
TRAIL SECTIONS

PROJECT NO.
20GR21

DATE
DEC 2025

DRAWING NO.
D1

SHEET NO.
5 OF 6

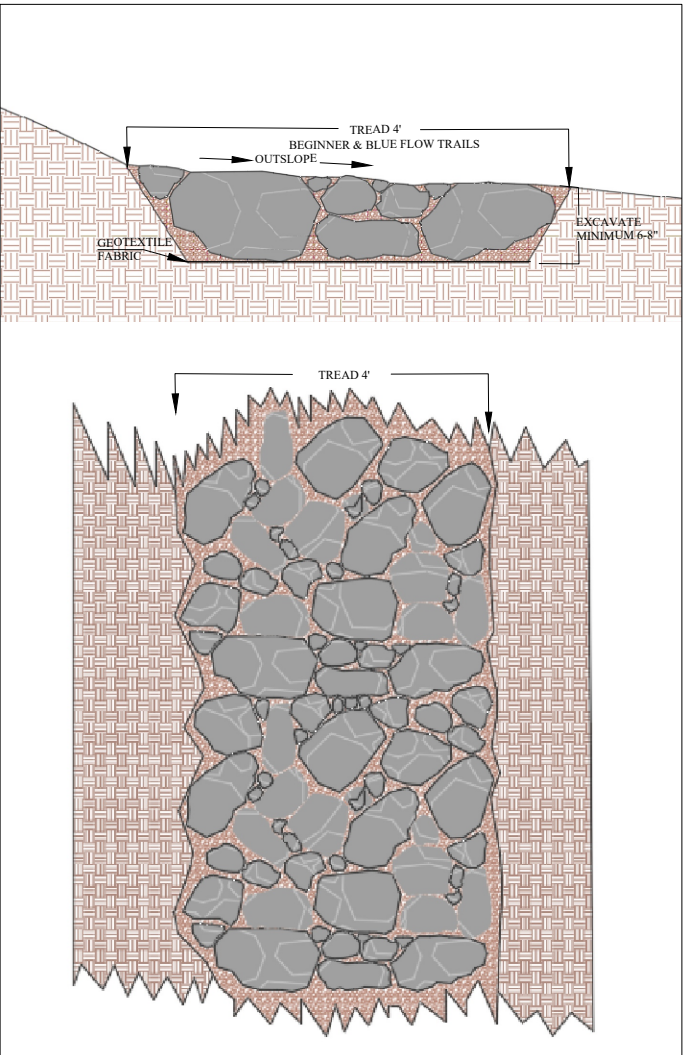


CULVERT
SCALE: NTS

1
D2

NOTE:

1. PIPE SECTIONS AND BANDS SUPPLIED BY CITY OF ROSEBURG. CONTRACTOR TO CUT LENGTH TO MEET PROPER LENGTH TO MAINTAIN SLOPE PROFILES.
2. PIPE BARREL TO BE PARTIALLY BURIED BELOW STREAM BED
3. EXCAVATE UPSTREAM AND DOWN STREAM A MINIMUM OF 3 FEET TO RE-ESTABLISH STREAM CHANNEL.
4. EXCAVATE/GRADE TRAIL TRANSITIONS TO ALIGN SMOOTHLY WITH CULVERT CROSSING



ARMORING TYPICAL
SCALE: NTS

2
D2

NOTES:

1. TREAD EXCAVATED 6-8" BELOW FINISH GRADE OF TRAIL TREAD AND REMOVE LOOSE SOIL.
2. GRADE TREAD TO BE SLIGHTLY OUTSLOPED AND COMPACT.
3. INSTALL NON-WOVEN GEOTEXTILE FABRIC
4. PLACE 4-8" ARMORING ROCKS IN TRAIL TREAD WITH MINIMAL VOIDS
5. FILL REMAINING VOIDS WITH 1"-0" AND COMPACT



DESIGNED:	DRAWN:	REVISIONS		
	AB	REV#	DESCRIPTION	DATE
<div>LINE IS 1 INCH AT FULL SCALE IF NOT 1-INCH - SCALE ACCORDINGLY</div>				

CITY OF ROSEBURG
Public Works Department
900 SE Douglas Ave.
Roseburg OR 97470

SUNSHINE PARK TRAILS EXPANSION	PROJECT NO. 20GR21	DRAWING NO. D2
DETAIL CULVERT AND ARMORING	DATE DEC 2025	SHEET NO. 6 OF 6